



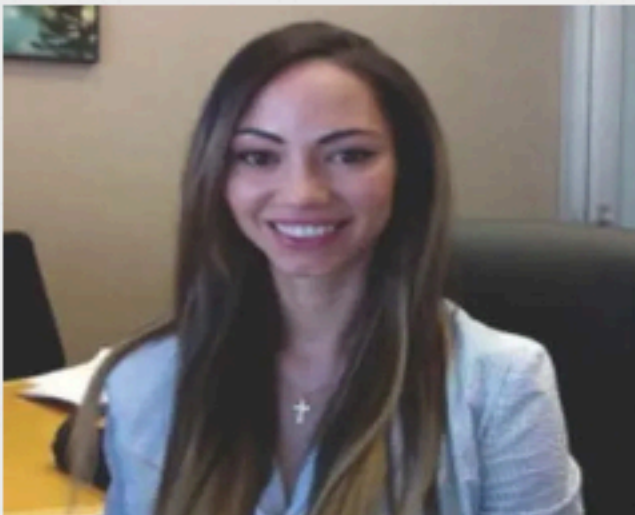
The Gailen and Cathy Reeves Center  
*For Community Empowerment*

The Gailen and Cathy Reeves Center for Community Empowerment  
&

Lincoln Memorial UCC

Invite You To A Virtual Presentation

"Alzheimer's Disease 2022: Early Warning Signs, Diagnosis,  
Treatment and Research"



April D. Thames, PhD.

Professor of Psychiatry

Chief Psychologist, Adult Division of Psychology

Associate Director, Medical Psychology Assessment  
Center

Semel Institute of Neuroscience and Human Behavior

UCLA Department of Psychiatry and Biobehavioral Sciences

**Sunday**

**May 15, 2022**

**1:30 PM - 3:00 PM PST**

For more information Contact:

Helena Williams

hlwilliams@gcrcla.org

Registration Required. Go to [www.gcrcla.org](http://www.gcrcla.org) to register. Click the flyer on the website to register.



Lincoln Memorial  
Congregational Church